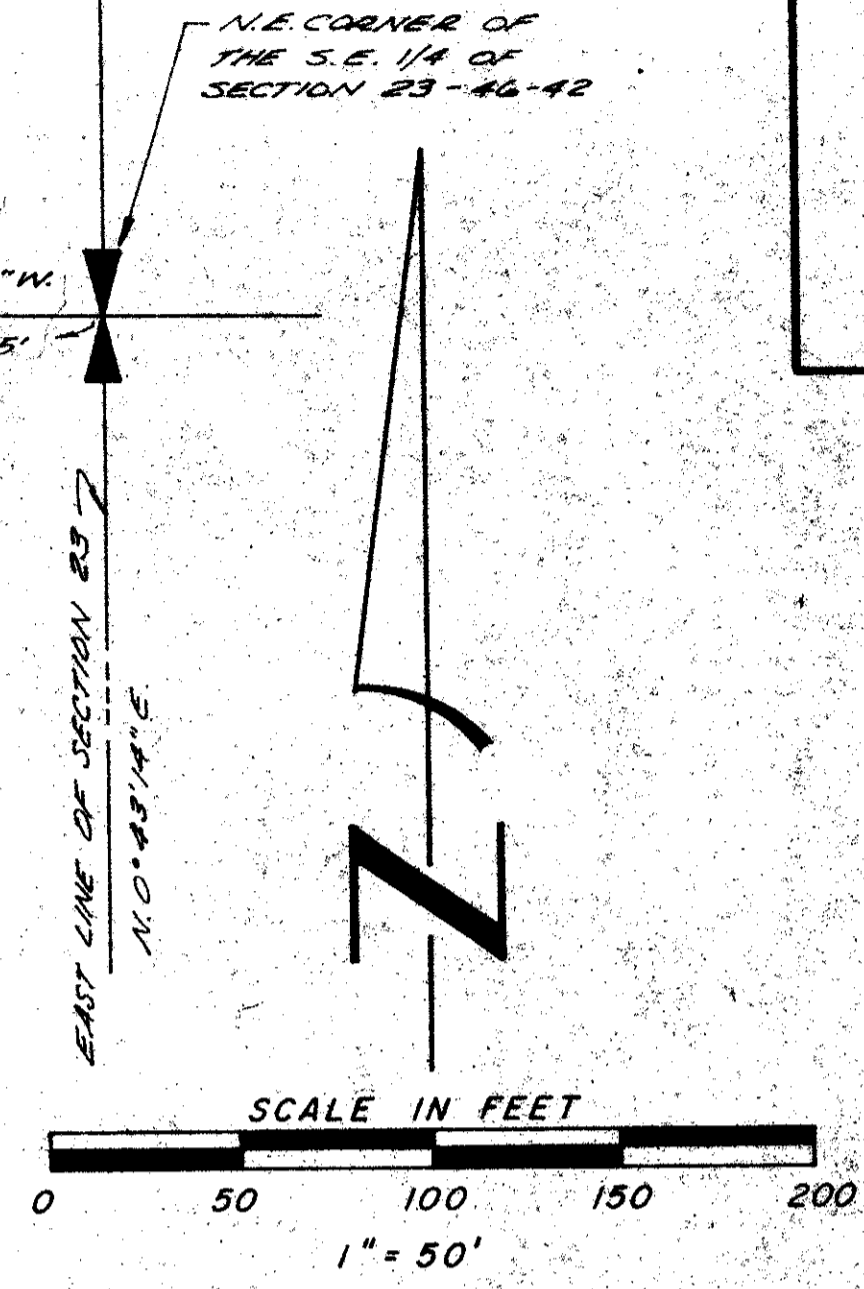
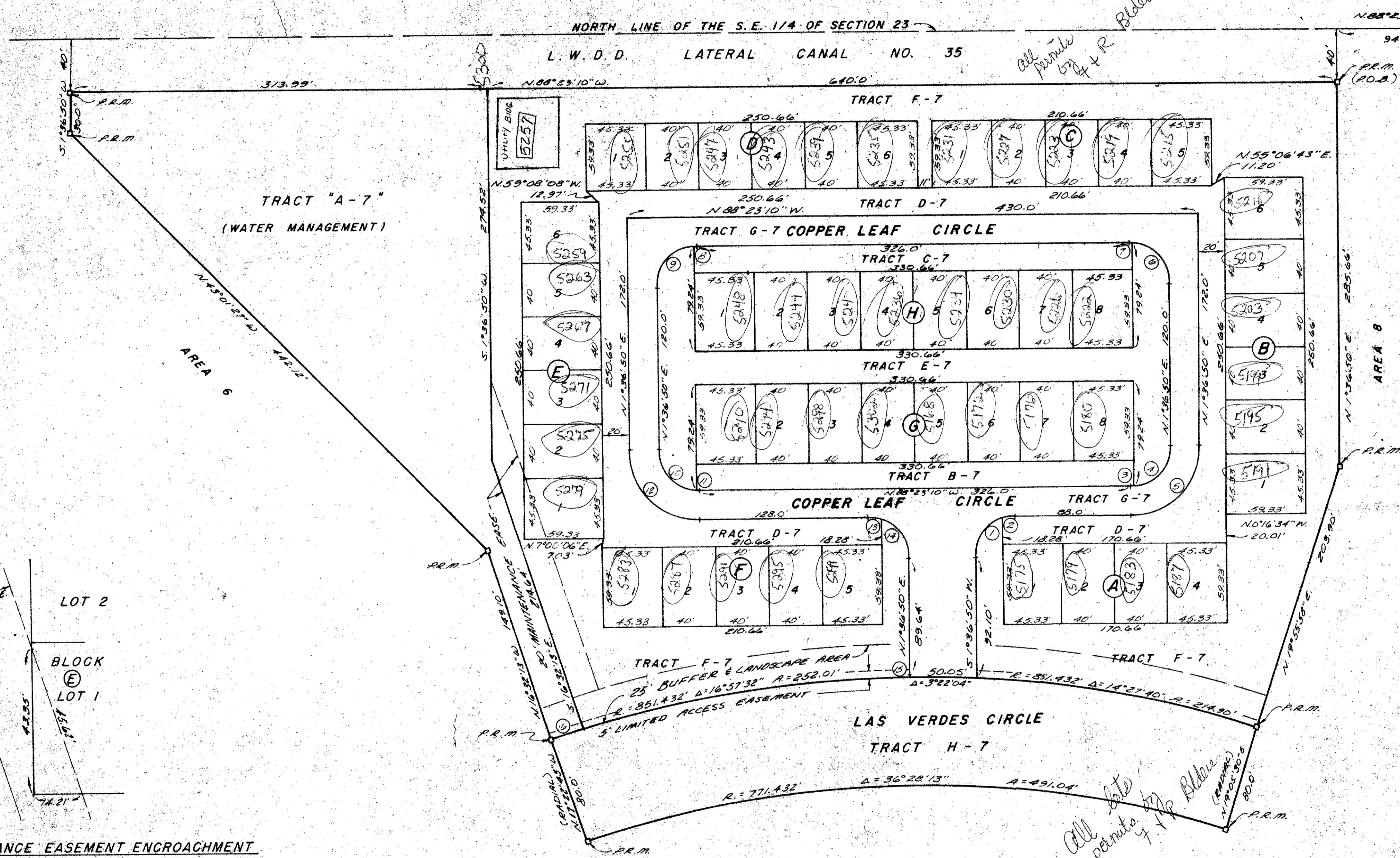


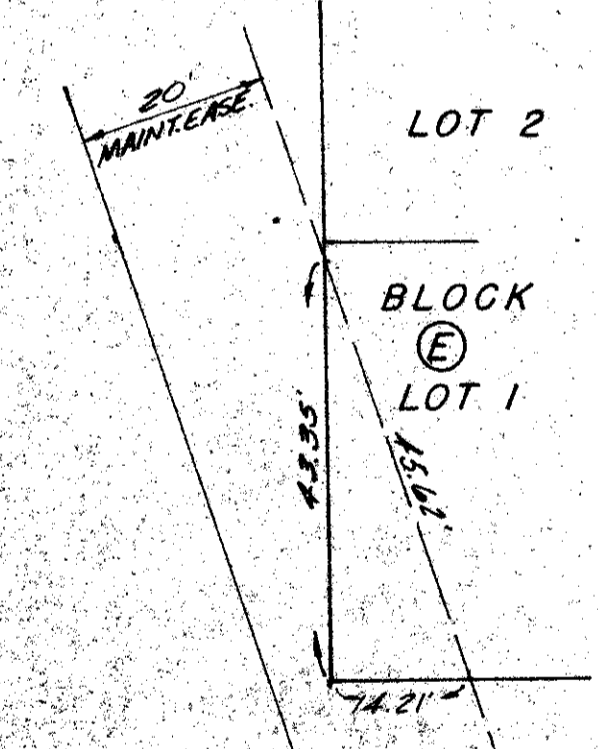
DRAWING NUMBER
39-15

15

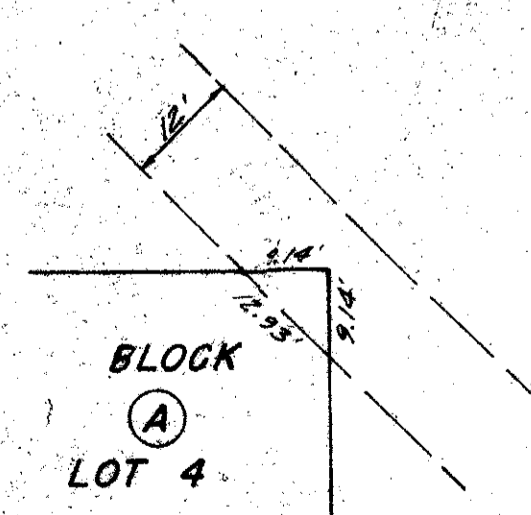
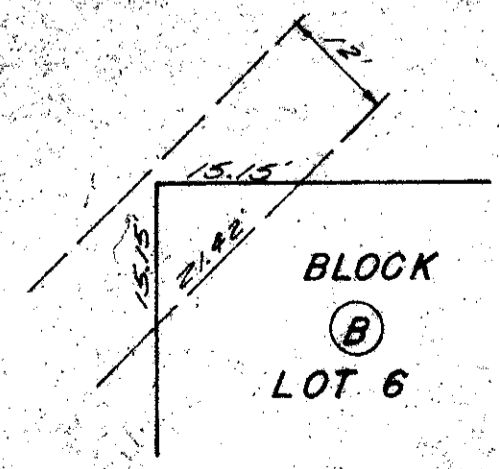
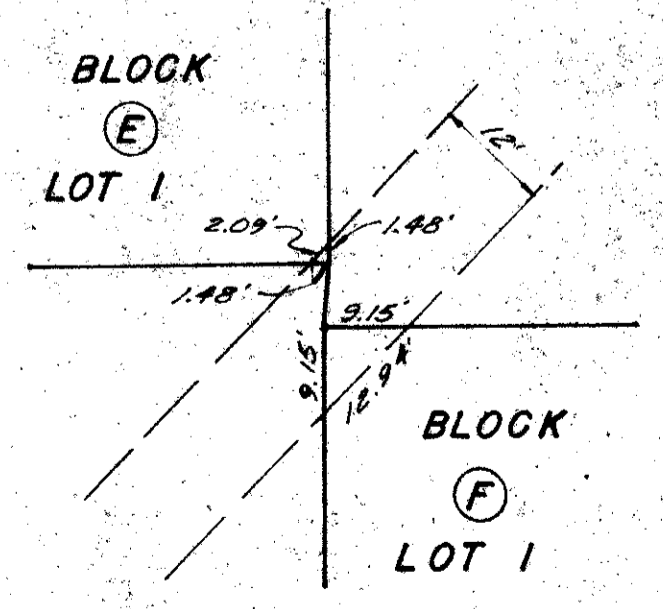
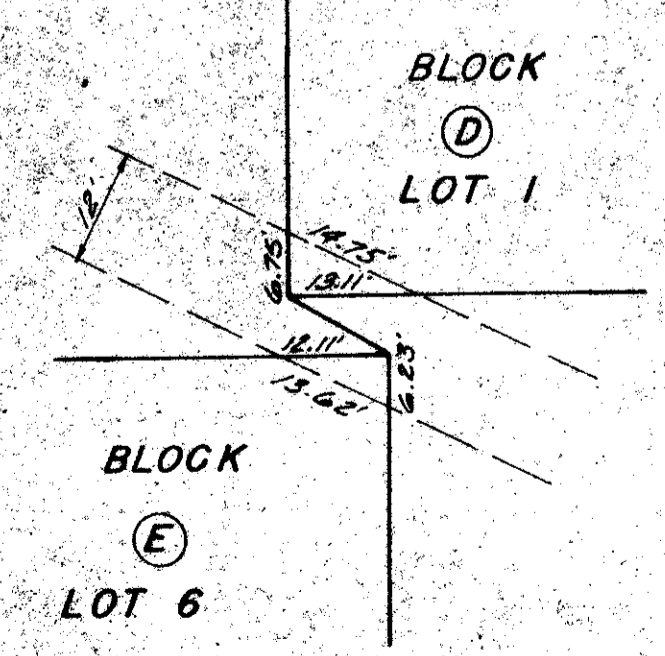
PART OF A PLANNED UNIT DEVELOPMENT
KINGS POINT PLAT NO. THREE
 A PART OF THE S.E. 1/4 OF SECTION 23
 TOWNSHIP 46 SOUTH, RANGE 42 EAST
 PALM BEACH COUNTY, FLORIDA



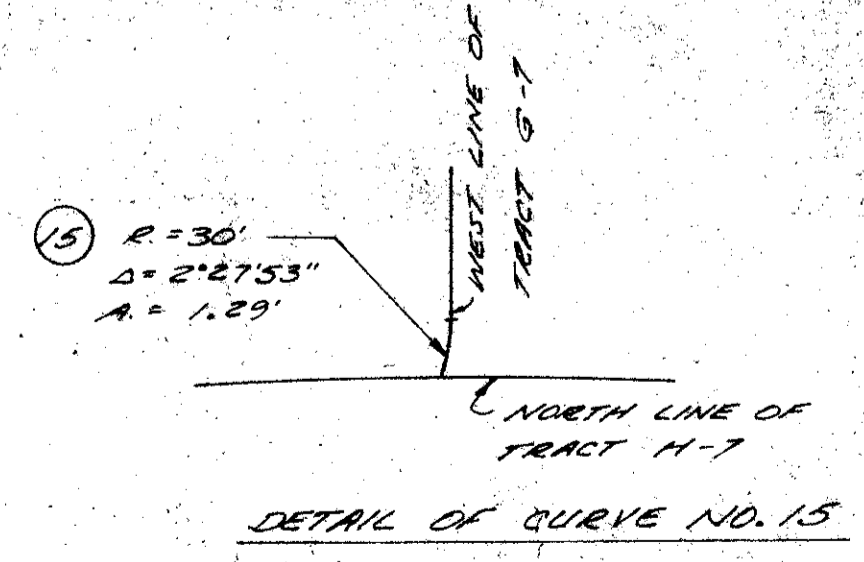
CURVE NO.	RADIUS	Δ	ARC
1	30'	70°31'44"	36.93'
2	30'	19°28'16"	10.20'
3	30'	4°27'16"	2.33'
4	30'	85°32'44"	44.79'
5	52'	90°	51.68'
6	30'	85°32'44"	44.79'
7	30'	4°27'16"	2.33'
8	30'	4°27'16"	2.33'
9	30'	85°32'44"	44.79'
10	30'	85°32'44"	44.79'
11	30'	4°27'16"	2.33'
12	52'	90°	51.68'
13	30'	19°28'16"	10.20'
14	30'	70°31'44"	36.93'
15	30'	2°27'53"	1.29'
16	85.143'	1°40'37"	65'



MAINTENANCE EASEMENT ENCROACHMENT DETAIL



DRAINAGE EASEMENT ENCROACHMENT DETAILS



DETAIL OF CURVE NO. 15

0263-302

PREPARED BY:
 E. BRETT CULPEPPER OF
 CFS and ASSOCIATES, INC.
 CONSULTING ENGINEERS
 FT. PIERCE, FLORIDA

KINGS POINT #3 39/15
 (SHEET 2 OF 2)